

**HARDWARE INSTALLATION**

**Insert SIM Card Before Using Tube-U4G**

Remove the cover on the back of Tube-U4G  
Insert SIM card as shown in the diagram below.



**Mounting Tube-U4G**

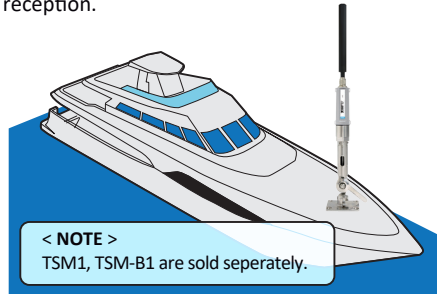
There are various ways to mount Tube-U4G onto a suitable location.

Tube-U4G can be mounted on:

**a Boat, or yacht**

**TSM1 + TSM-B1 application scenario**

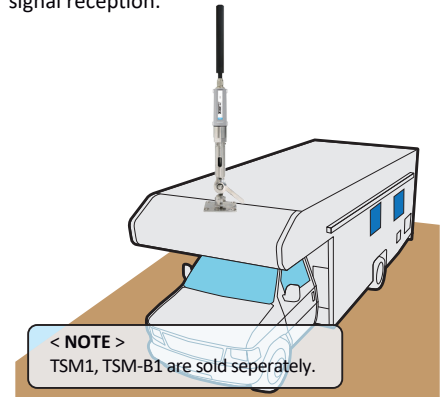
Tube-U4G can be installed with TSM1+TSMB1 combination to provide mounting options on slanted or level surfaces, as well as various adjustments of antenna angle for better signal reception.



**b RV or school bus**

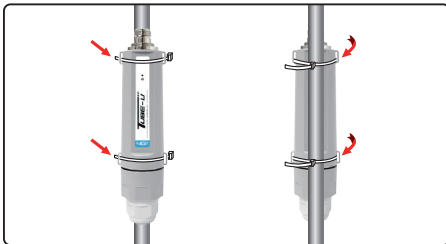
**TSM1 + TSM-B1 application scenario**

Combining Tube-U4G with TSM1+TSMB1, this combination provides mounting options on the border, roof, or rear end of vehicle, as well as various adjustments of antenna angle for better signal reception.



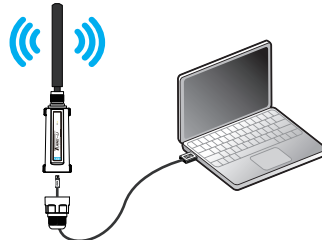
**c Fence, wall or roof installation**

Via intuitive mounting ear design, Tube-U4G can be strapped via plastic strap in product package. This gives great flexibility to install Tube-U4G on the pole, the fence, or fixed on the wall.



**Install Tube-U4G to your computer**

Tube-U4G is powered by USB host port, and designed to work with USB 2.0 / 3.0 port on your computer. To start using Tube-U4G, please find the USB cable in product package; connect Tube-U4G with mini-USB connector, and plug the USB type A connectors into an available USB port on your computer.

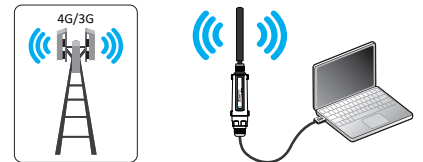


**< NOTE >**  
Please make sure the rear cap securely tightened before connecting to computer.

**SOFTWARE INSTALLATION**

**Install Tube-U4G Utility Program**

Tube-U4G contains the necessary drivers for Windows 7/8/10 platform; an installation CD is not required. The first time connecting Tube-U4G to a Windows computer, Tube-U4G utility program will start utility program installation automatically. Please permit the program installation if there is prompt window during the installation. Follow the onscreen instructions to complete the setup of the Tube-U4G utility program.



**< NOTE >**  
If the computer does not have Tube-U4G drivers installed, Tube-U4G will prepare the utility program installation.  
If the utility program is already installed, Tube-U4G will be detected, and utility program will be up, and running for you.

**< NOTE >**

- If the installation does not start automatically, please turn on the CD Auto Run feature in your computer or manually browse the new CD-ROM drive added by Tube-U4G in "My Computer", the setup.exe file of Tube-U4G program can be found in the CD-ROM drive.
  - Manual installation: Double-click the "Setup.exe" file and follow the on-screen instructions to complete the Installation. (Please permit the program installation if there is any prompt message during the installation process.)
- After installation is completed, a shortcut to the Tube-U4G program will appear on your computer desktop.

**Start Using Tube-U4G**

Make sure Tube-U4G is inside a network coverage area. On your computer's desktop, double-click the icon to launch the Tube-U4G connection program.

**Tube-U4G Program Home Page**



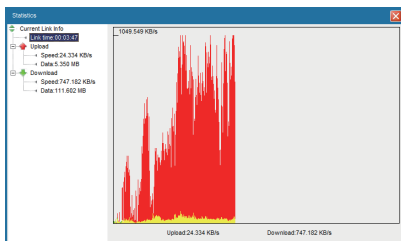
**< NOTE >**

When using Tube-U4G with a PIN-enabled SIM card, each time at program launch, it will be required to input proper PIN code to use Tube-U4G. If the PIN-code is incorrectly input three times, SIM will be locked. To unlock a locked SIM card, a PUK code is required. The PUK code can be obtained from the service provider. (When asking for PUK code, please contact your service provider to verify you are the owner of the SIM card.)

## Tube-U4G Program Features

### Statistics

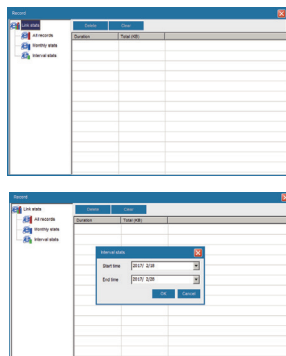
Users can view present network transfer rates, the data used in total and the connection time. Statistics listed in this menu will be reset after the modem is unplugged.



**< NOTE >**  
Download data is shown in red, and upload data is shown in yellow.

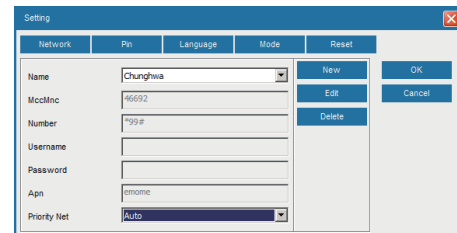
### Records

Users can review accumulated overall usage over time, including network access duration and the total network data transferred (in kilobytes) in a month or a selected time.



### SETTINGS

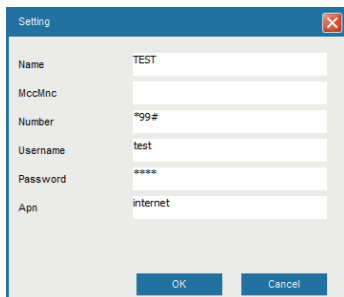
The "Setting"->"Network" menu is used to select or setup network access parameters and priority of subscribed network services. Our modem utility includes preset parameters of major carriers around the world. Please select a suitable connection parameter profile from the drop-down list before attempting to connect to the Internet.



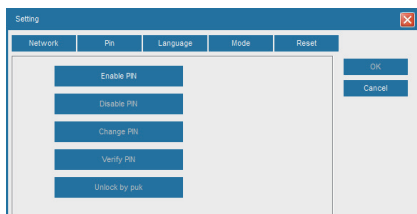
If you cannot find a carrier connection profile from the drop-down list, you will need to create a new one matching your subscribed data plan. Please consult your carrier to obtain the connection parameters, and click the "New" button to add new network connection parameters to the Tube-U4G utility program.

**< NOTE >**  
The default connection profile is **Chunghwa Telecom** (located in Taiwan). Various network operation modes can be selected. The default is **Auto**, but GPRS Only / UMTS only, or LTE only can be selected. After selecting the operation mode, the modem will register to chosen network according to the selected mode.

**• PIN code settings**  
"Setting"->"PIN" menu is used to enable/disable, change, modify and unlock locked PIN code via PUK. When inserting a PIN-enabled SIM card, modem will be prompt for PIN code before using it. If the PIN codes were modified, please unplug / replug modem. The modem utility will prompt for the new PIN code.



**< NOTE >**  
After three failed attempts to enter the PIN code, the SIM card will be locked. To unlock the SIM card, you will be required to enter the correct PUK to retrieve the default PIN code. Please contact your service provider to obtain the PUK code information. With incorrect PIN code input, the modem is unable to register on the network; **All network service will be unavailable.**



**• Reset modem**  
"Settings"->"Reset" menu is used to restore the device to factory default settings and reboot the device.

**Additional Information**  
For up-to-date product information, descriptions, documentation, application updates, and support information, please visit [www.alfa.com.tw](http://www.alfa.com.tw)

