

# Quectel Windows USB Driver(Q) NDIS Installation Guide

**LTE&5G Module Series**

Version: 2.2

Date: 2022-05-10

Status: Released



At Quectel, our aim is to provide timely and comprehensive services to our customers. If you require any assistance, please contact our headquarters:

**Quectel Wireless Solutions Co., Ltd.**

Building 5, Shanghai Business Park Phase III (Area B), No.1016 Tianlin Road, Minhang District, Shanghai 200233, China

Tel: +86 21 5108 6236

Email: [info@quectel.com](mailto:info@quectel.com)

**Or our local offices. For more information, please visit:**

<http://www.quectel.com/support/sales.htm>.

**For technical support, or to report documentation errors, please visit:**

<http://www.quectel.com/support/technical.htm>.

Or email us at: [support@quectel.com](mailto:support@quectel.com).

## Legal Notices

We offer information as a service to you. The provided information is based on your requirements and we make every effort to ensure its quality. You agree that you are responsible for using independent analysis and evaluation in designing intended products, and we provide reference designs for illustrative purposes only. Before using any hardware, software or service guided by this document, please read this notice carefully. Even though we employ commercially reasonable efforts to provide the best possible experience, you hereby acknowledge and agree that this document and related services hereunder are provided to you on an "as available" basis. We may revise or restate this document from time to time at our sole discretion without any prior notice to you.

## Use and Disclosure Restrictions

### License Agreements

Documents and information provided by us shall be kept confidential, unless specific permission is granted. They shall not be accessed or used for any purpose except as expressly provided herein.

### Copyright

Our and third-party products hereunder may contain copyrighted material. Such copyrighted material shall not be copied, reproduced, distributed, merged, published, translated, or modified without prior written consent. We and the third party have exclusive rights over copyrighted material. No license shall be granted or conveyed under any patents, copyrights, trademarks, or service mark rights. To avoid ambiguities, purchasing in any form cannot be deemed as granting a license other than the normal non-exclusive, royalty-free license to use the material. We reserve the right to take legal action for noncompliance with abovementioned requirements, unauthorized use, or other illegal or malicious use of the material.

## Trademarks

Except as otherwise set forth herein, nothing in this document shall be construed as conferring any rights to use any trademark, trade name or name, abbreviation, or counterfeit product thereof owned by Quectel or any third party in advertising, publicity, or other aspects.

## Third-Party Rights

This document may refer to hardware, software and/or documentation owned by one or more third parties ("third-party materials"). Use of such third-party materials shall be governed by all restrictions and obligations applicable thereto.

We make no warranty or representation, either express or implied, regarding the third-party materials, including but not limited to any implied or statutory, warranties of merchantability or fitness for a particular purpose, quiet enjoyment, system integration, information accuracy, and non-infringement of any third-party intellectual property rights with regard to the licensed technology or use thereof. Nothing herein constitutes a representation or warranty by us to either develop, enhance, modify, distribute, market, sell, offer for sale, or otherwise maintain production of any our products or any other hardware, software, device, tool, information, or product. We moreover disclaim any and all warranties arising from the course of dealing or usage of trade.

## Privacy Policy

To implement module functionality, certain device data are uploaded to Quectel's or third-party's servers, including carriers, chipset suppliers or customer-designated servers. Quectel, strictly abiding by the relevant laws and regulations, shall retain, use, disclose or otherwise process relevant data for the purpose of performing the service only or as permitted by applicable laws. Before data interaction with third parties, please be informed of their privacy and data security policy.

## Disclaimer

- a) We acknowledge no liability for any injury or damage arising from the reliance upon the information.
- b) We shall bear no liability resulting from any inaccuracies or omissions, or from the use of the information contained herein.
- c) While we have made every effort to ensure that the functions and features under development are free from errors, it is possible that they could contain errors, inaccuracies, and omissions. Unless otherwise provided by valid agreement, we make no warranties of any kind, either implied or express, and exclude all liability for any loss or damage suffered in connection with the use of features and functions under development, to the maximum extent permitted by law, regardless of whether such loss or damage may have been foreseeable.
- d) We are not responsible for the accessibility, safety, accuracy, availability, legality, or completeness of information, advertising, commercial offers, products, services, and materials on third-party websites and third-party resources.

**Copyright © Quectel Wireless Solutions Co., Ltd. 2022. All rights reserved.**

# About the Document

## Revision History

Version	Date	Author	Description
1.0	2017-11-14	Hunter LV/ Joy WANG	Initial
2.0	2018-12-24	Isaac WANG	<ol style="list-style-type: none"> <li>Added the applicable modules EM06, EM12, EG12 of this document.</li> <li>Modified some screenshots of driver installation. (Figure 1, 4, 7, 9, 10, 16)</li> </ol>
2.1	2019-07-08	Isaac WANG	<ol style="list-style-type: none"> <li>Added applicable modules EM05, EG18, EM20, BG95, AG35, AG15, AG520R, RG500Q of this document. Please refer to Table 2 for details.</li> <li>Updated all the screenshots of USB driver installation and uninstallation except Figure 8. (Chapter 2 and 3).</li> </ol>
2.2	2022-05-10	Bruce LI	<ol style="list-style-type: none"> <li>Updated the driver name.</li> <li>Updated the Windows operating system supported by the provided installation package (Chapter 1).</li> <li>Added applicable modules RG525F-NA, RG500Q series, RG501Q-EU, RG502Q series, RG520F series, RG520N series, RG530F series, RM500Q series, RM502Q-AE, RM505Q-AE, RM510Q-GL, RM520N-GL and RM530N-GL and deleted EC20 R2.0 and EM20 (Chapter 1.1).</li> <li>Updated the test tool from QNavigator to QCOM (Chapter 2.3).</li> </ol>

## **Contents**

<b>About the Document.....</b>	<b>3</b>
<b>Contents .....</b>	<b>4</b>
<b>Table Index .....</b>	<b>5</b>
<b>Figure Index .....</b>	<b>6</b>
<b>1 Introduction .....</b>	<b>7</b>
1.1. Applicable Modules .....	7
<b>2 Installation of USB NDIS Driver.....</b>	<b>8</b>
2.1. Preparation.....	8
2.2. Installation Procedures .....	9
2.3. Test.....	14
<b>3 Uninstallation of USB Driver.....</b>	<b>15</b>
3.1. Uninstallation Procedures .....	15
<b>4 Appendix References .....</b>	<b>20</b>

## Table Index

Table 1: Applicable Modules.....	7
Table 2: Related Document.....	20
Table 3: Terms and Abbreviations .....	20

## Figure Index

Figure 1: “Device Manager” Interface of Windows System without Quectel Driver Installed.....	8
Figure 2: Preparing to Install.....	9
Figure 3: Choose Destination Location.....	10
Figure 4: Keep Default Destination Location .....	10
Figure 5: Copy Files .....	11
Figure 6: Automatic Installation.....	11
Figure 7: Complete Installation .....	12
Figure 8: “Device Manager” Interface with Driver Successfully Installed .....	13
Figure 9: Test Module via QCOM (Take RG500Q-EU as an Example).....	14
Figure 10: Uninstall USB NDIS Driver .....	15
Figure 11: Check Uninstallation Setting.....	16
Figure 12: Confirm Uninstallation.....	16
Figure 13: Automatic Uninstallation .....	17
Figure 14: Remove Installation Files.....	17
Figure 15: Complete Uninstallation.....	18
Figure 16: Check USB NDIS Driver Uninstallation Result.....	19

# 1 Introduction

This document illustrates how to install and uninstall USB NDIS driver for Quectel LTE and 5G modules on Windows operating systems, with provided installation package.

The installation package (*Quectel\_Windows\_USB\_Driver(Q)\_NDIS*) supports Windows 7, 8, 8.1, 10, 11 and XP operating systems. This document introduces the installation procedures of USB NDIS driver on Windows 10 system as an example.

## 1.1. Applicable Modules

The document is applicable to the following Quectel LTE and 5G modules.

**Table 1: Applicable Modules**

Module Series		Module
LTE	LTE Standard	EC20-CE, EC21 Series, EC25 Series, EG91 Series, EG95 Series, EM05 Series
	LTE-A	EG06 Series, EG12 Series, EG18 Series, EM06 Series, EM12-G, EP06 Series
	LPWA	BG95 Series, BG96
	Automotive	AG15, AG35 Series, AG520R Series
5G		RG525F-NA, RG500Q Series, RG501Q-EU, RG502Q Series, RG520F Series, RG520N Series, RG530F Series, RM500Q Series, RM502Q-AE, RM505Q-AE, RM510Q-GL, RM520N-GL, RM530N-GL



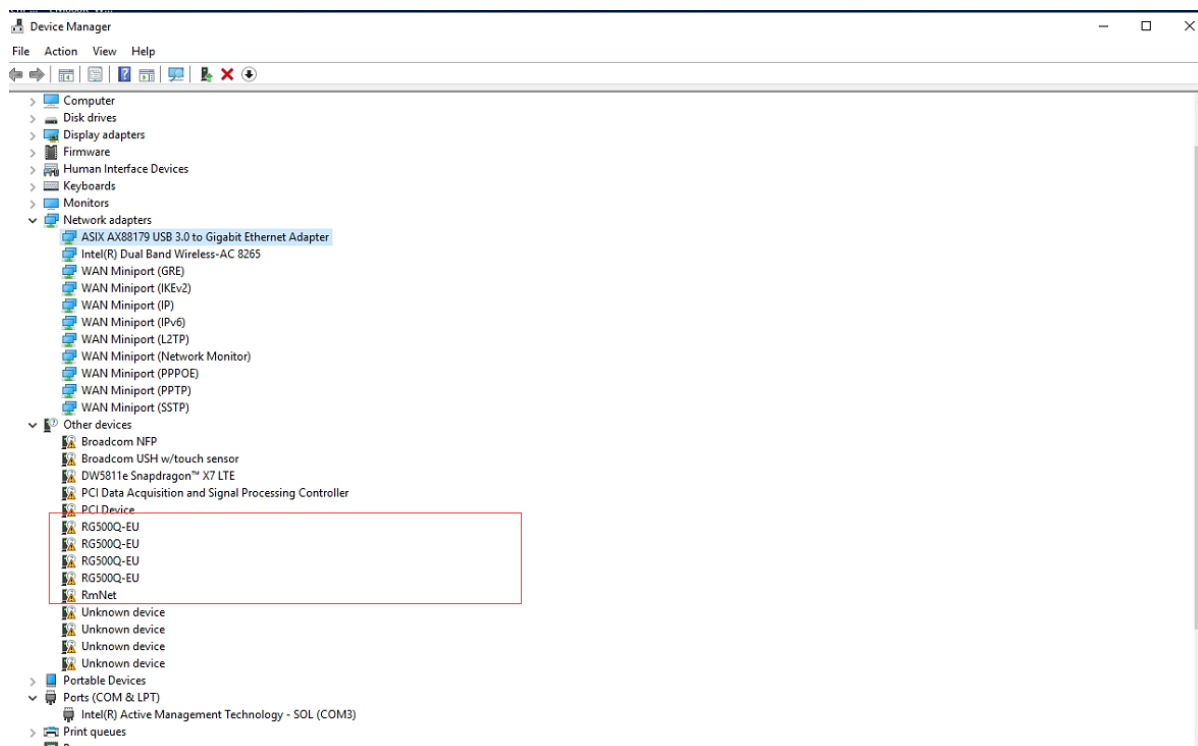
# 2 Installation of USB NDIS Driver

This chapter describes how to install USB NDIS driver for Quectel LTE and 5G modules with the provided installation package.

## 2.1. Preparation

You can install Quectel USB NDIS driver directly on your system before the module is connected to PC. Or you can install the USB NDIS driver after connecting the module to PC through a USB cable. If you have never installed any Quectel driver on your system before, there would be a prompt indicating that the drivers of the new devices need to be updated. Please ignore the prompt and begin to install the USB NDIS driver according to the procedures in **Chapter 2.2**.

The figure below shows the “Computer Management” → “Device Manager” interface of Windows system on which Quectel drivers have never been installed.



**Figure 1: “Device Manager” Interface of Windows System without Quectel Driver Installed**

**NOTE**

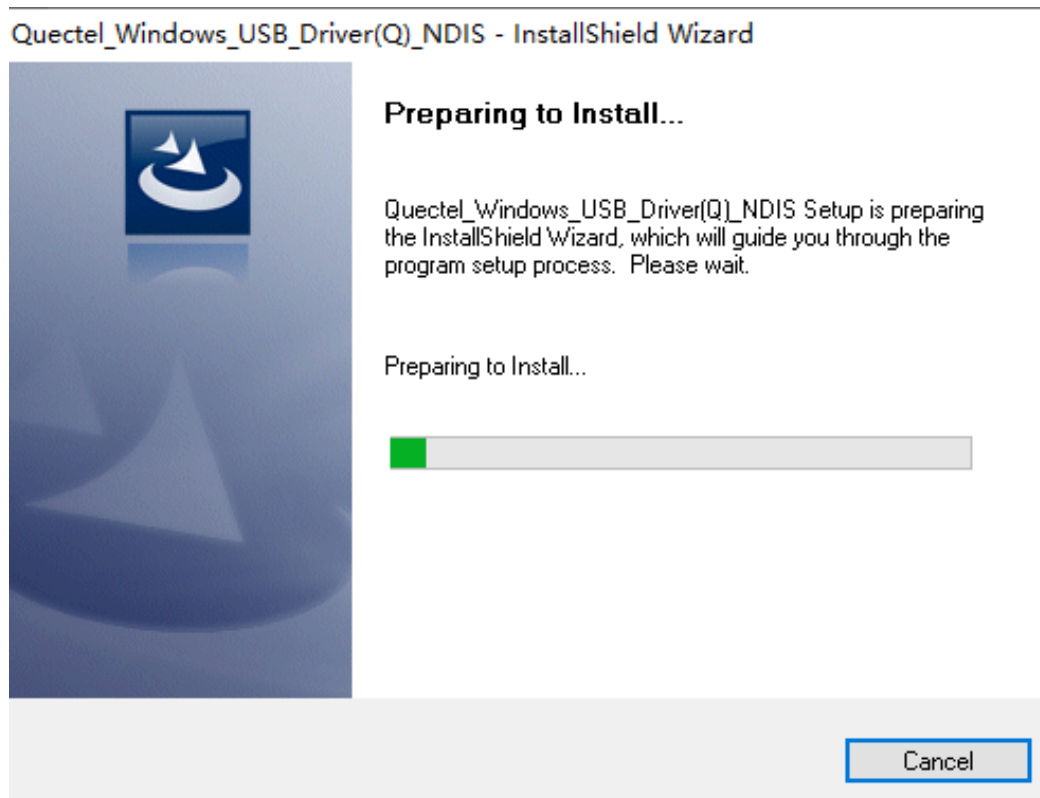
For Windows XP system, you **MUST** ensure that the module has been connected to PC before installing USB NDIS driver.

## 2.2. Installation Procedures

Before installing USB NDIS driver, please get the latest installation package from Quectel. This document takes the installation of *Quectel\_Windows\_USB\_Driver(Q)\_NDIS\_V2.2.14* as an example, and the detailed procedures are as below.

### 1. Check Installation Setting

Double click the *setup.exe* in installation package to enter the “Preparing to Install” interface as below:

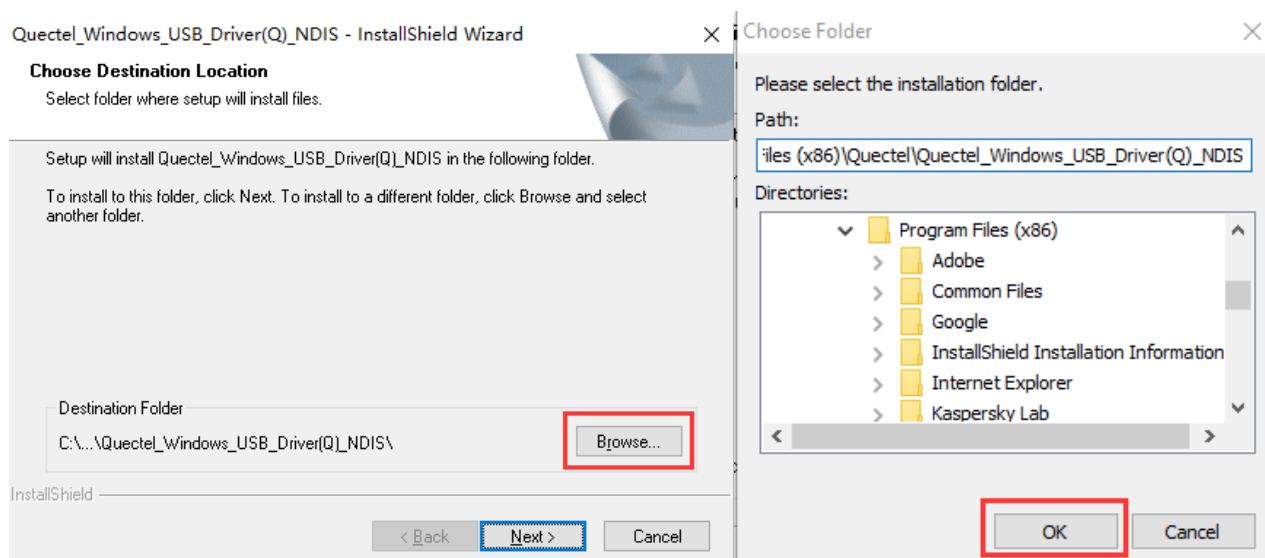


**Figure 2: Preparing to Install**

After the InstallShield Wizard is prepared, it enters the “Choose Destination Location” interface.

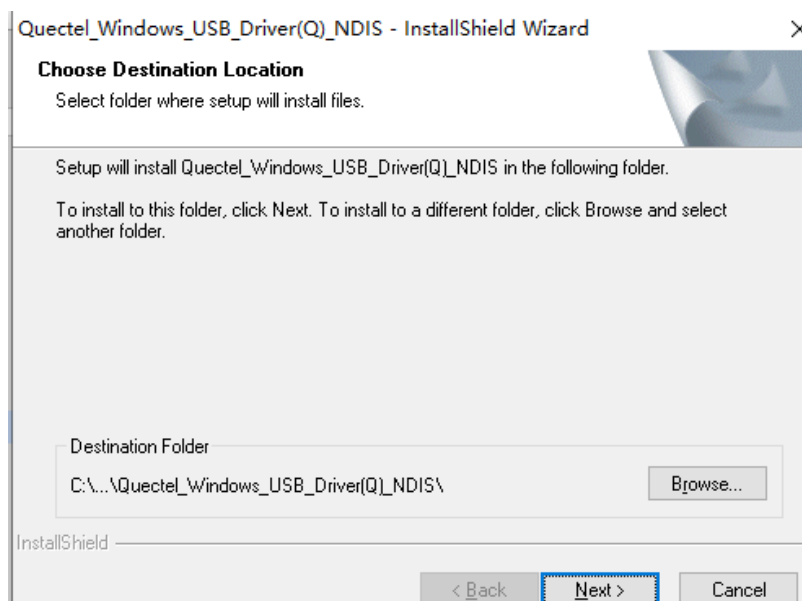
## 2. Choose Destination Location

If you want to change the location for USB NDIS driver installation, click “**Browse...**” to enter the “Choose Folder” interface. You can select the destination location and then click “**OK**” to save the configuration. The interface returns to “Choose Destination Location” interface and you can click “**Next**” to continue the installation.



**Figure 3: Choose Destination Location**

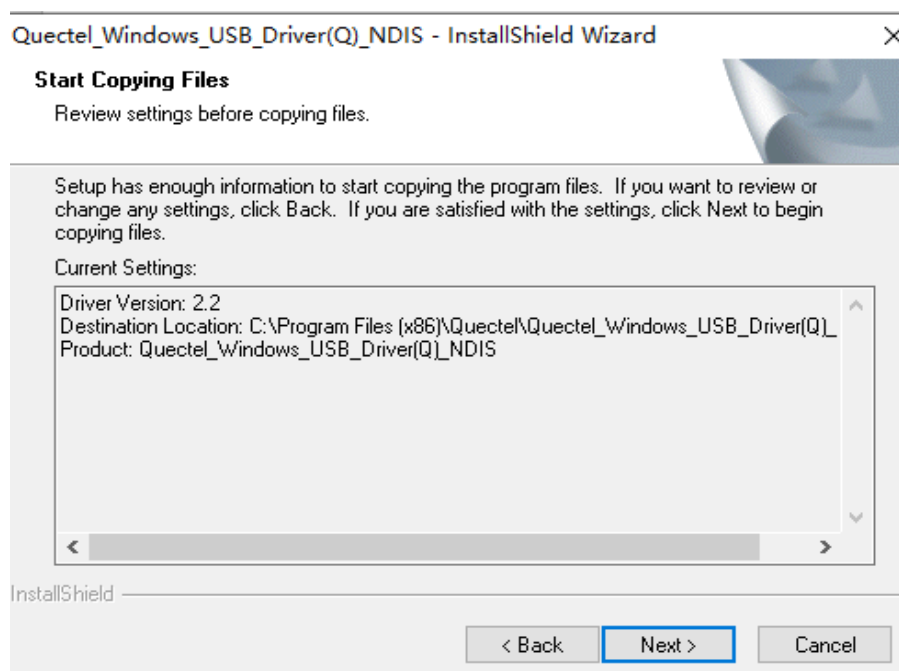
If you do not want to change the location for USB NDIS driver installation, you can click “**Next**” directly to continue the installation.



**Figure 4: Keep Default Destination Location**

### 3. Prepare Driver Files Needed for Installation

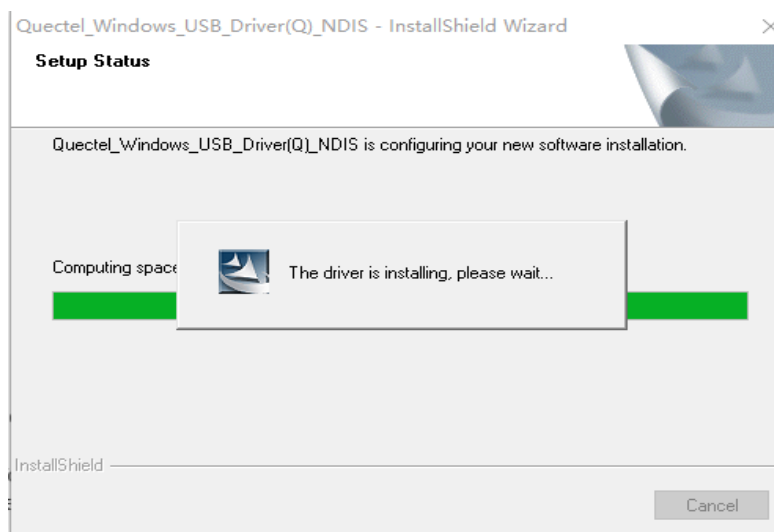
When the following interface shows, please click “**Next**” to begin copying files.



**Figure 5: Copy Files**

### 4. Automatic Installation

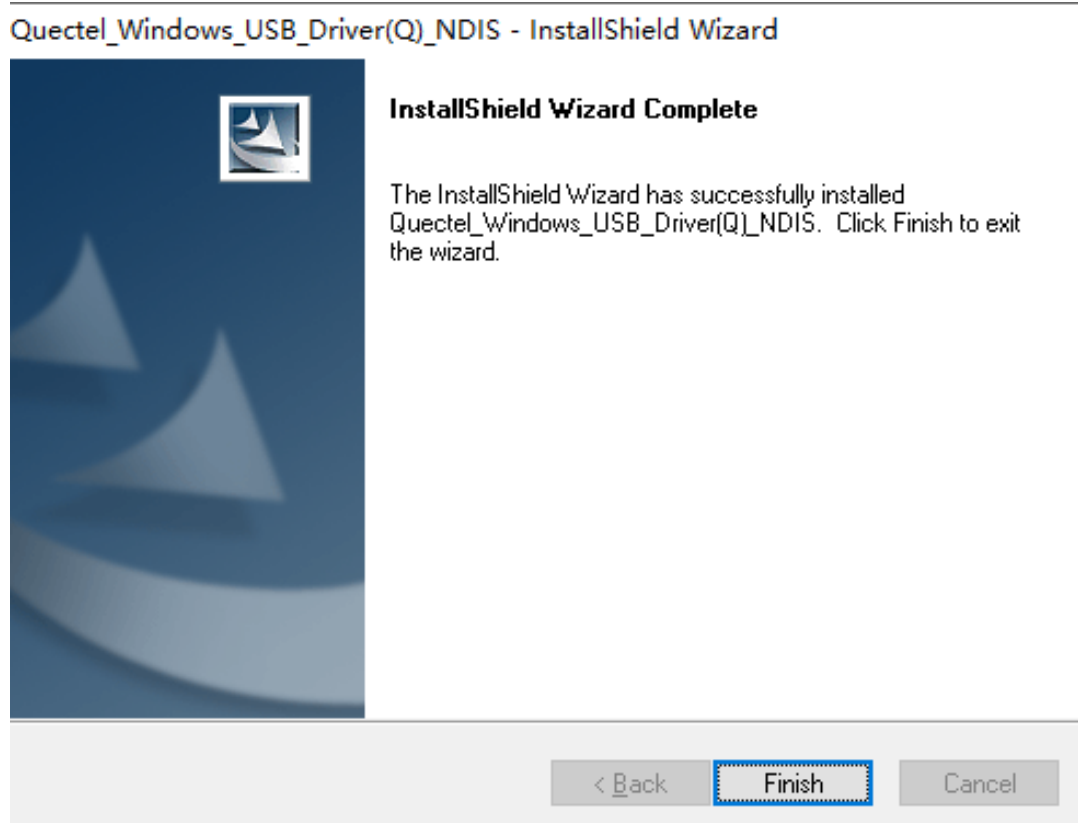
Driver installation automatically starts after file copying completes. It may take some time to install the USB NDIS driver, please wait patiently for the process to complete.



**Figure 6: Automatic Installation**

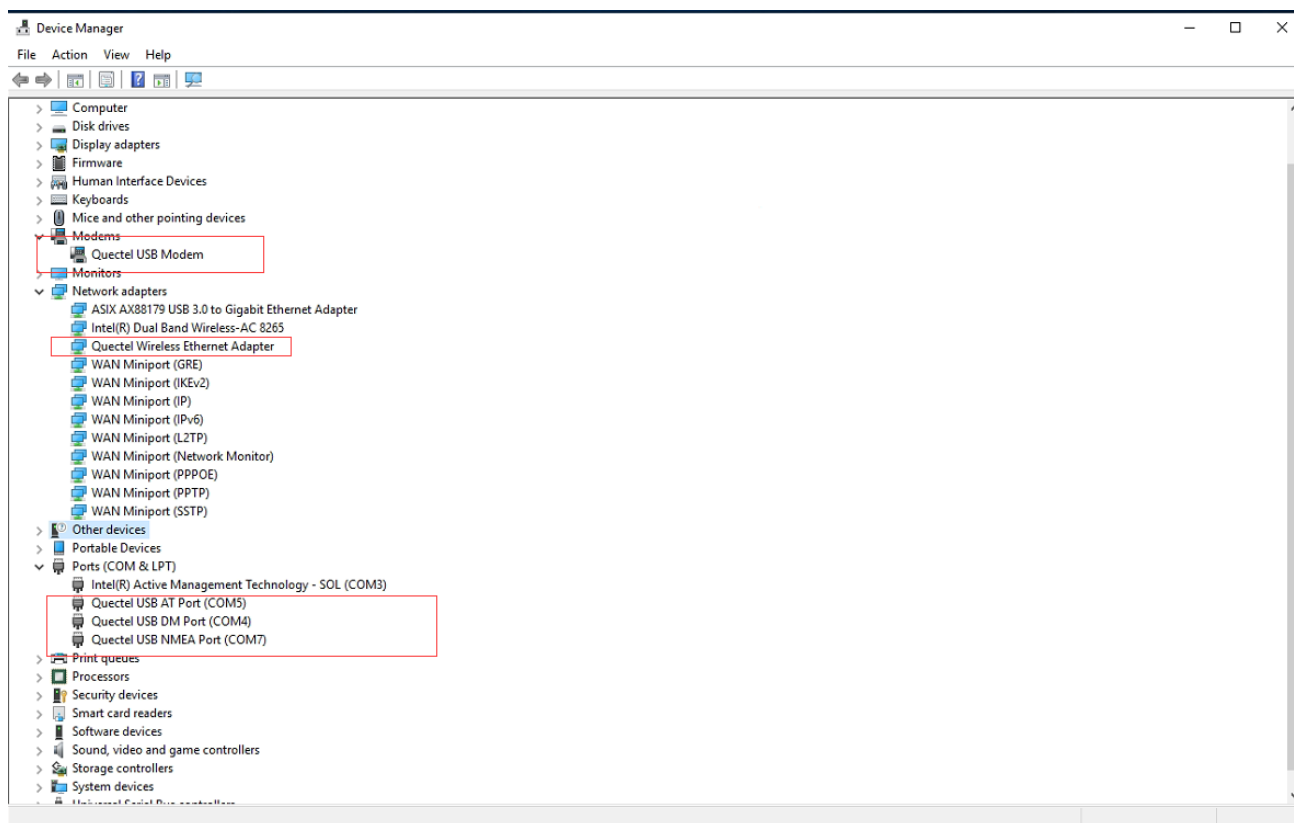
## 5. Complete Installation

When the following interface shows, it indicates a successful driver installation. Click **“Finish”** to complete the installation.



**Figure 7: Complete Installation**

You can check the installation result through “Computer Management” → “Device Manager”. The “Device Manager” interface after a successful driver installation is shown as below.



**Figure 8: “Device Manager” Interface with Driver Successfully Installed**

## 2.3. Test

After the USB NDIS driver has been installed, you can test whether the driver works normally via QCOM. For detailed steps, see [document \[1\]](#).

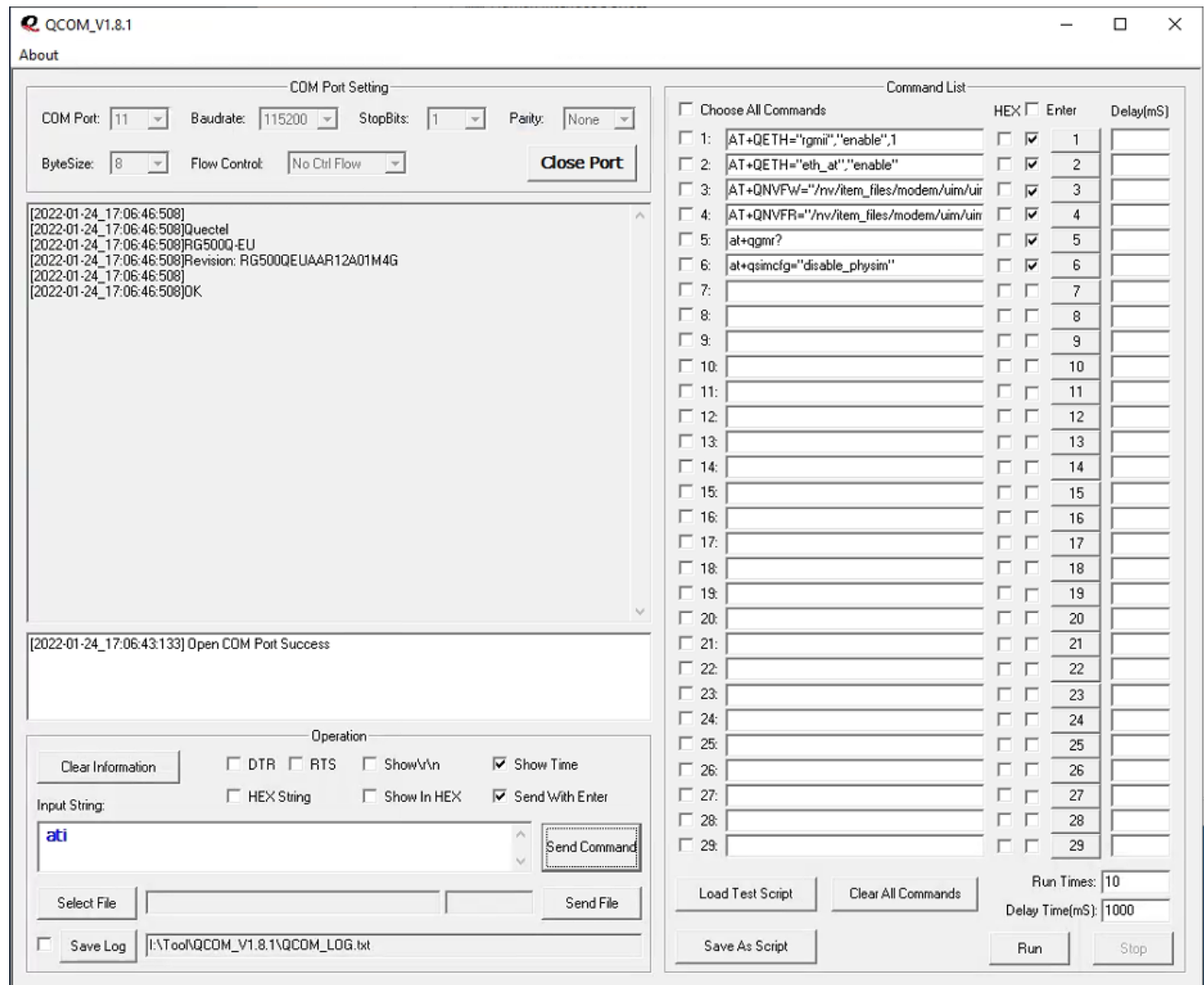


Figure 9: Test Module via QCOM (Take RG500Q-EU as an Example)

# 3 Uninstallation of USB NDIS Driver

The uninstallation can be realized by re-operating installation package or adding/deleting program on “Control Panel”. This chapter introduces how to uninstall the USB NDIS driver by adding/deleting program on “Control Panel”.

## 3.1. Uninstallation Procedures

### 1. Choose Driver

Enter “Control Panel” and choose the installed USB NDIS driver, then click “**Uninstall**”, as shown below.

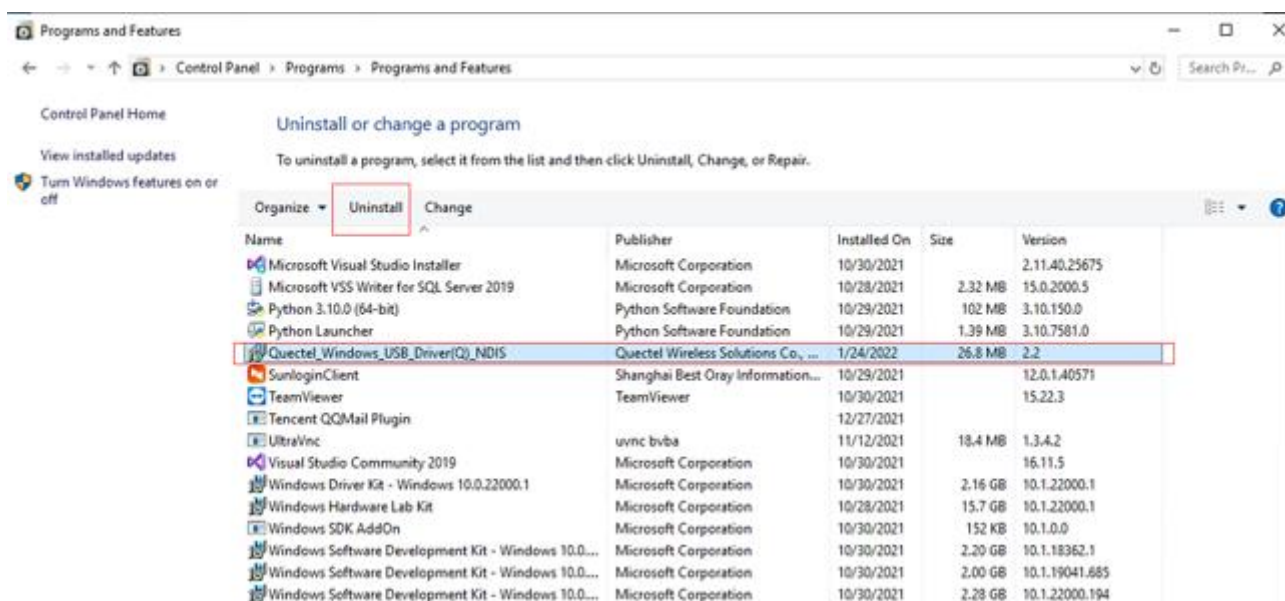


Figure 10: Uninstall USB NDIS Driver



## 2. Check Uninstallation Setting

After choosing the installed driver for uninstallation, the system will check the uninstallation setting, as shown in the following figure.

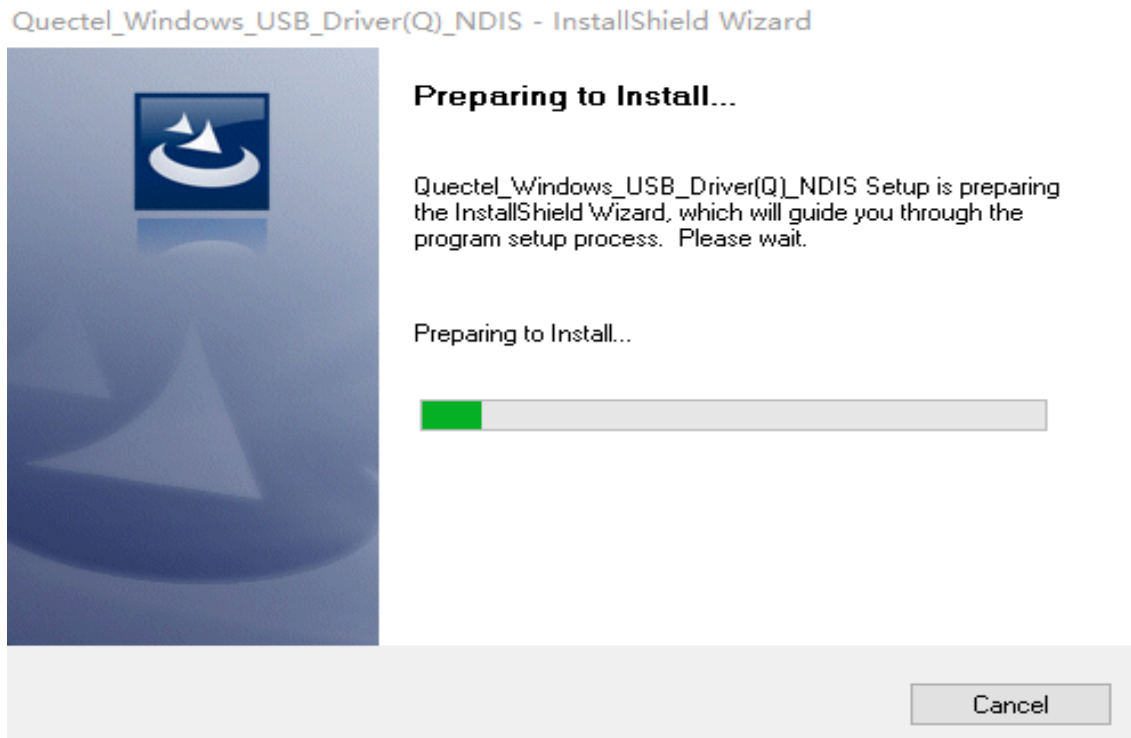


Figure 11: Check Uninstallation Setting

## 3. Confirm Uninstallation

Click **"Yes"** to confirm the uninstallation.

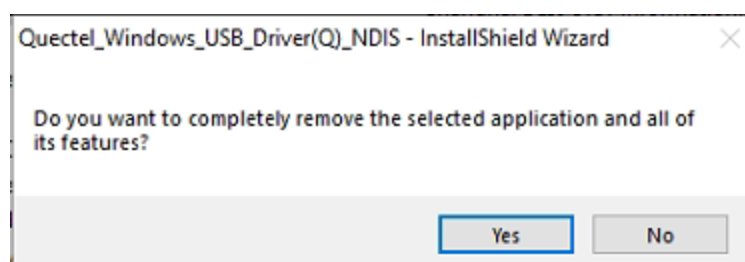
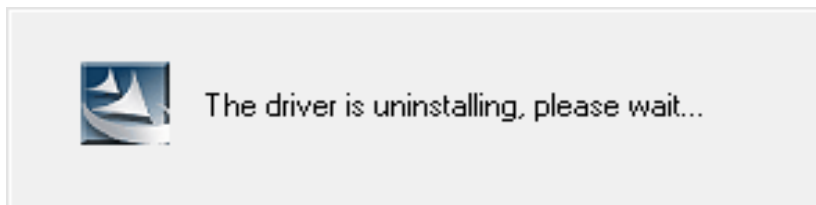


Figure 12: Confirm Uninstallation

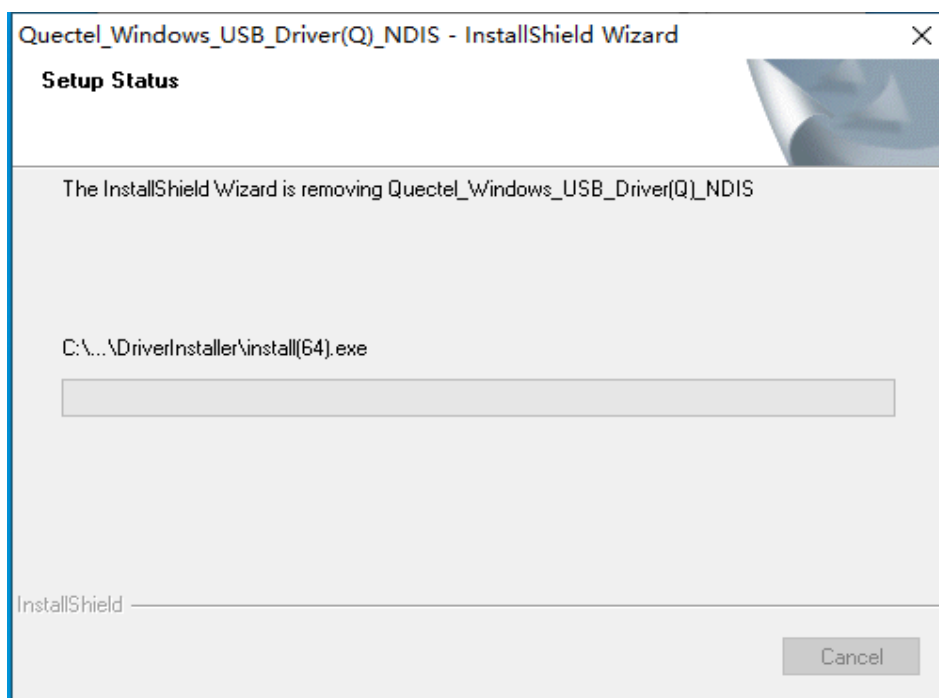
#### 4. Automatic Uninstallation

Driver uninstallation automatically starts after you confirm the uninstallation. It may take some time to uninstall the driver, please wait patiently for the process to complete.



**Figure 13: Automatic Uninstallation**

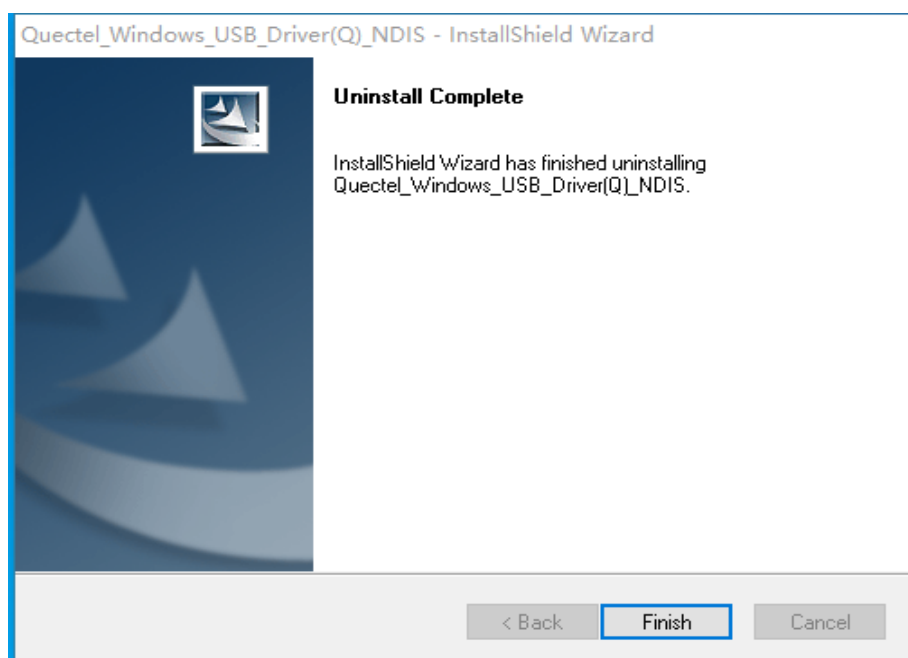
Please wait patiently when InstallShield Wizard is removing installation files as illustrated below.



**Figure 14: Remove Installation Files**

#### 5. Complete Uninstallation

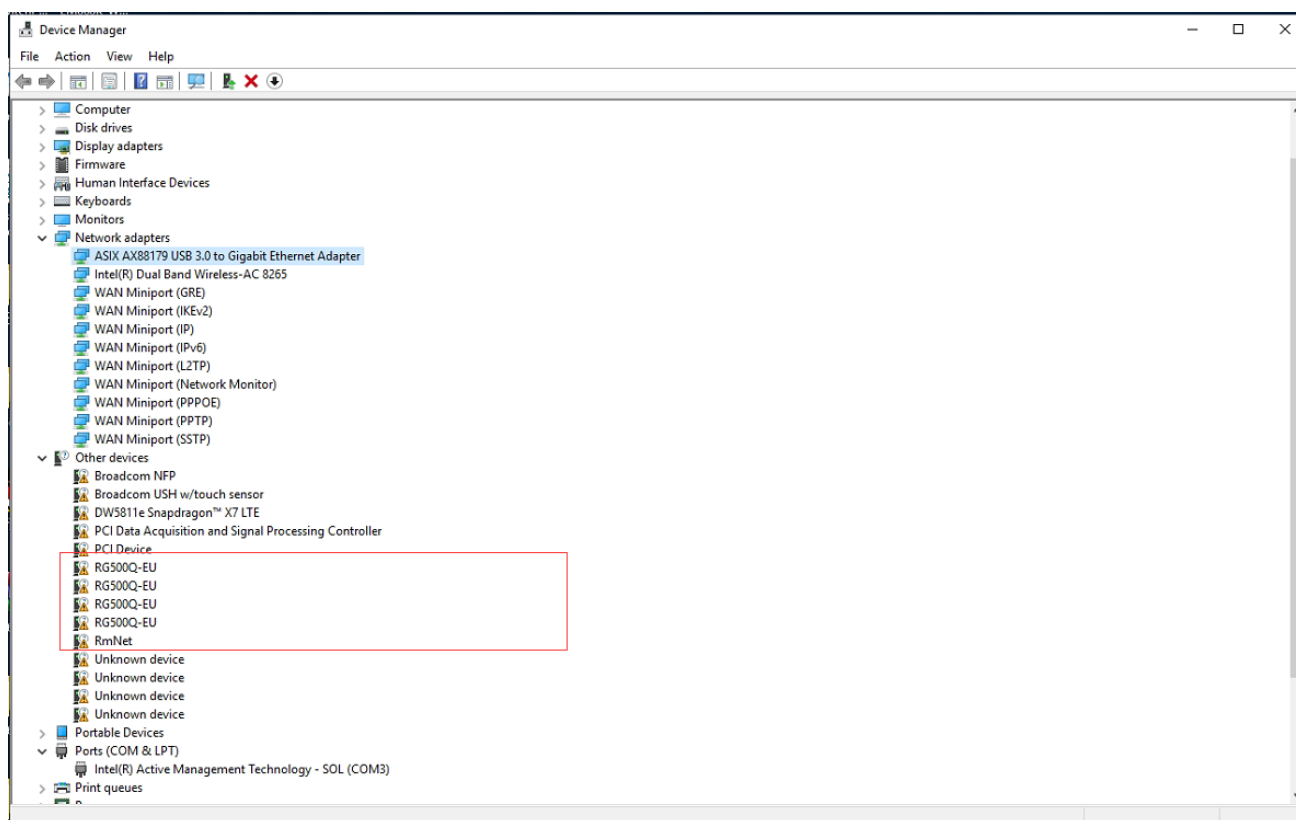
When the following interface shows, it indicates the driver has been uninstalled successfully. Click **“Finish”** to complete uninstallation.



**Figure 15: Complete Uninstallation**

## **6. Check Uninstallation Result**

After the USB NDIS driver has been uninstalled successfully, the device will switch to uninstalled status. You can check whether the driver has been uninstalled successfully or not through “Computer Management” → “Device Manager”. The “Device Manager” interface after a successful driver uninstallation is shown as below.



**Figure 16: Check USB NDIS Driver Uninstallation Result**

# 4 Appendix References

**Table 2: Related Document**

Document Name
[1] Quectel_QCOM_User_Guide

**Table 3: Terms and Abbreviations**

Abbreviation	Description
5G	5th-Generation
LPWA	Low-Power Wide-Area (Network)
LTE	Long-Term Evolution
LTE-A	LTE-Advanced
PC	Personal Computer
USB	Universal Serial Bus