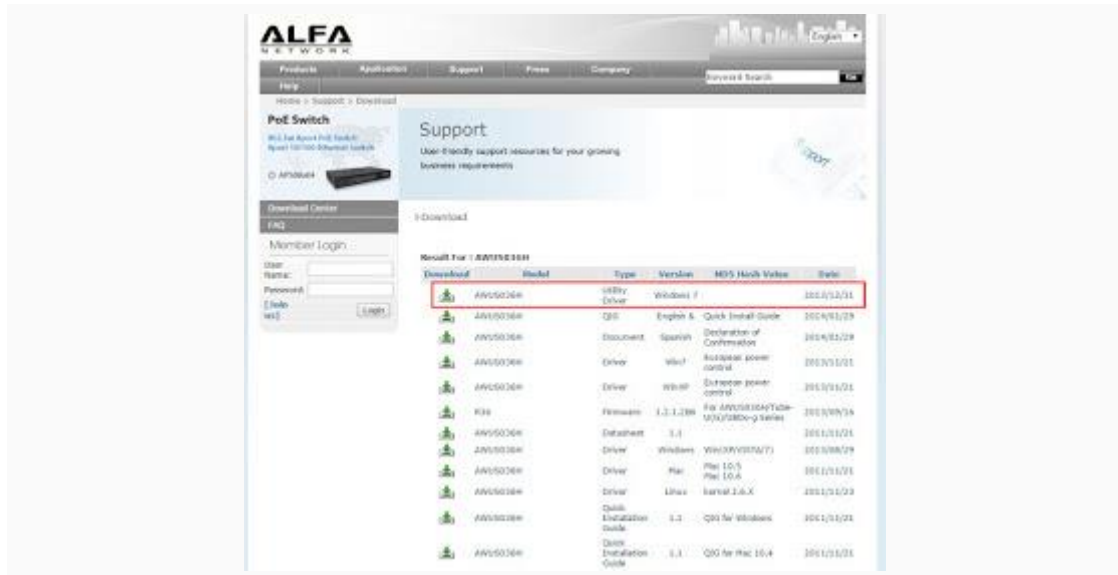


Windows 10 Compatible List

	WLAN AutoConfig	WLAN utility	ALFA WiFi Scanner
AWUS036H	✓	N/A	✓
AWUS036EW	✓	N/A	✓
UBDo-g / UBDo-gt	✓	N/A	✓
Tube-U(G) / Tube-U(G)s	✓	N/A	✓

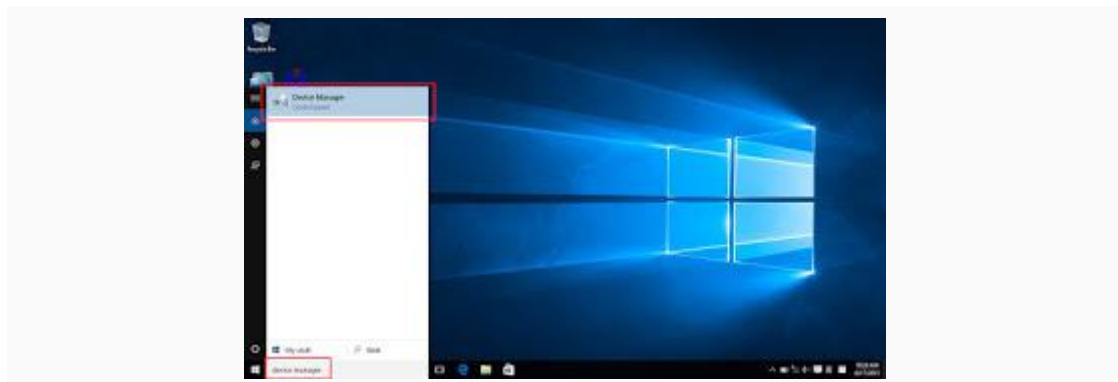
Window 10 Installation Guide

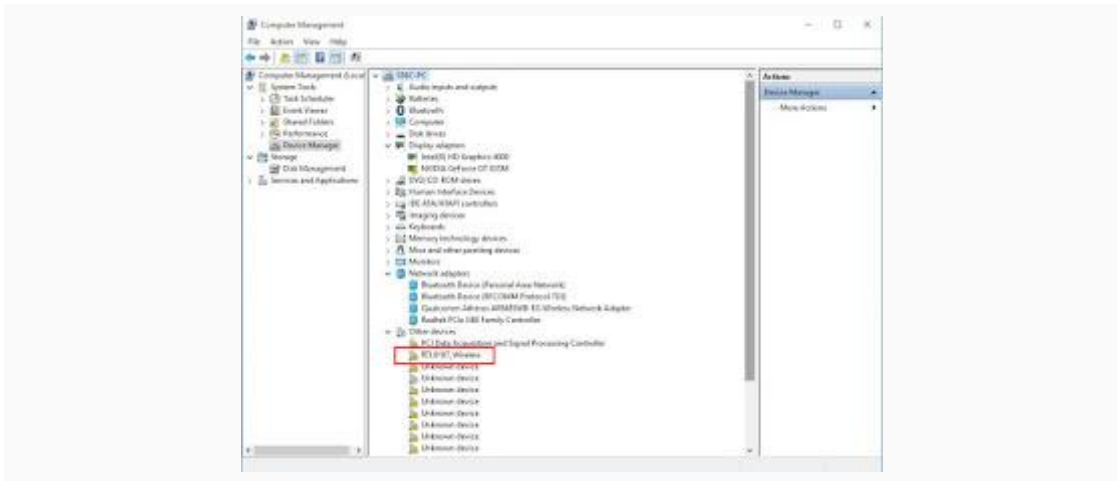
**** Before Plug-in AWUS036H, insert the ALFA driver DVD into DVD-ROM or download the AWUS036H windows 7 from ALFA download website ****



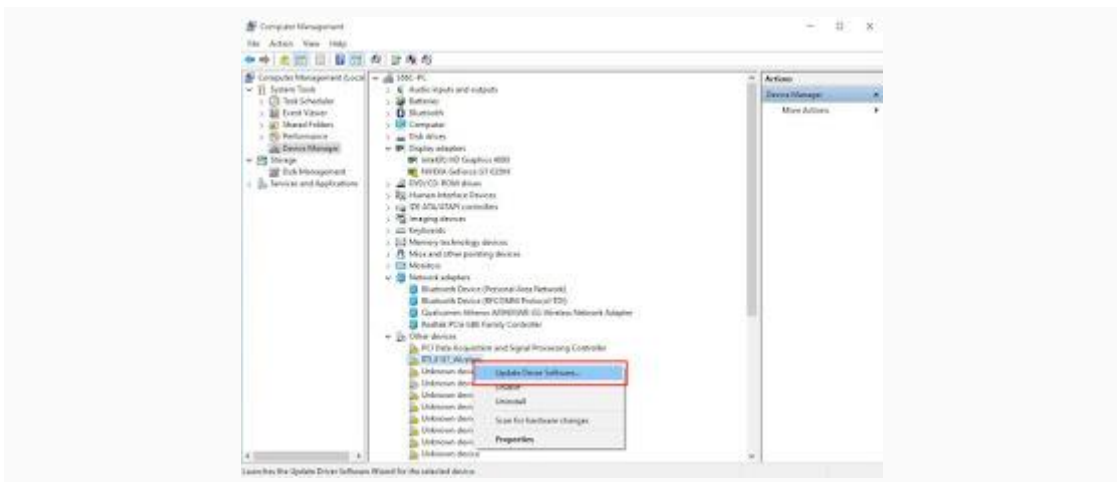
1. After plug-in AWUS036H, go to device manager (type device manger in search bar)

You will find the RTL8187_Wireless in the Other devices list

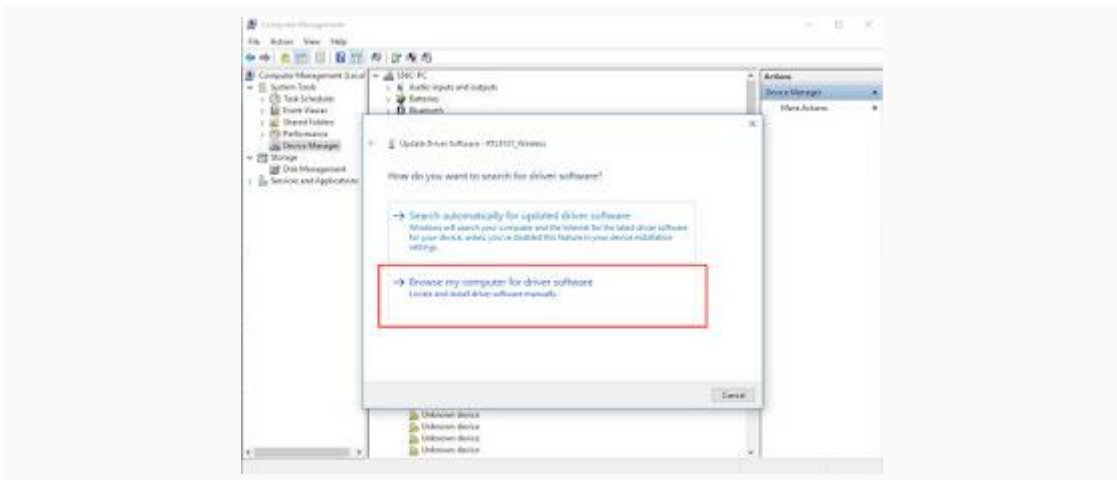




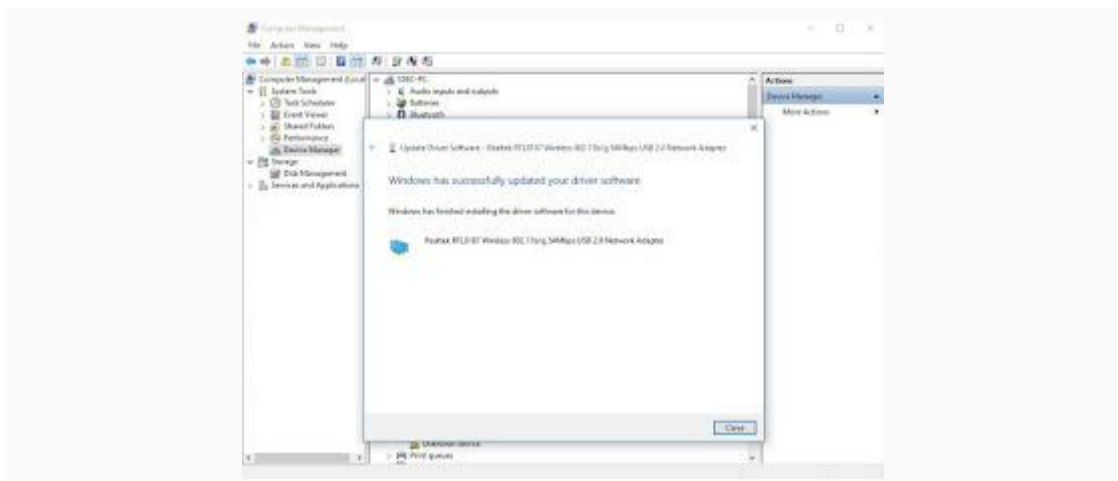
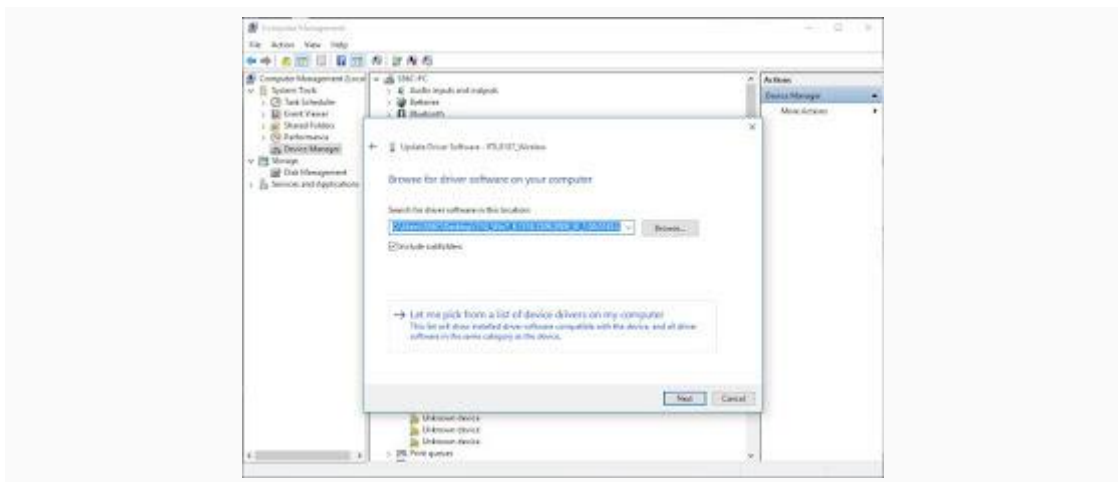
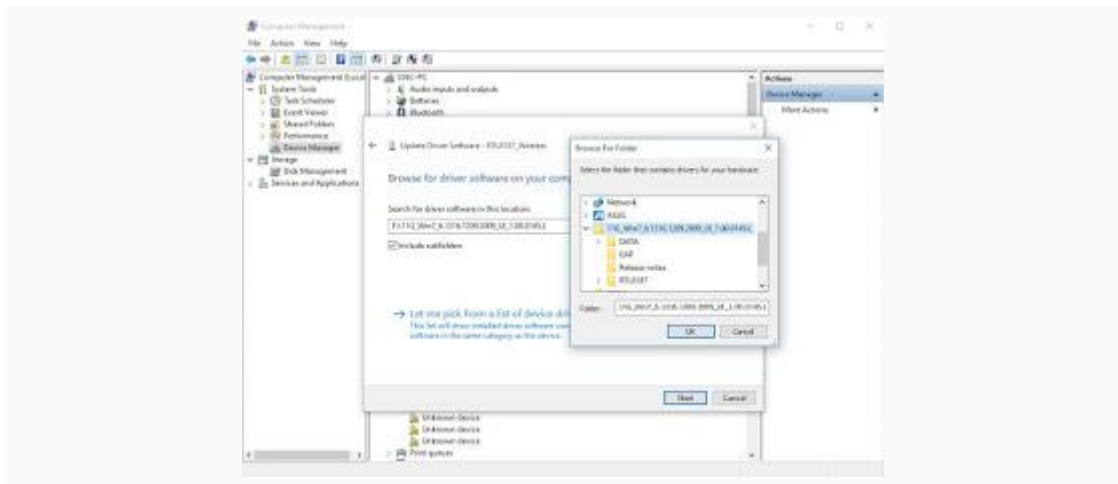
2. Right click the mouse and choose " Update Driver Software"



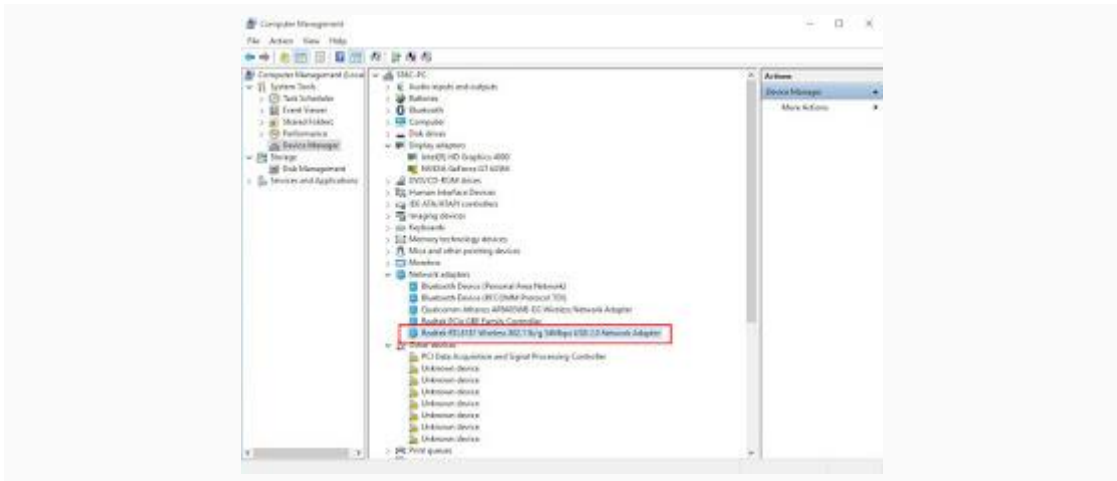
3. Choose "Browse my computer for driver software"



4. Select the AWUS036H windows 7 driver folder and follow steps



5. after driver install successful, you can check the device manager
 Realtek RTL8187 wireless adapter in Network adapter list



6. use Windows 10 WiFi connection tool to select your prefer AP and connect

