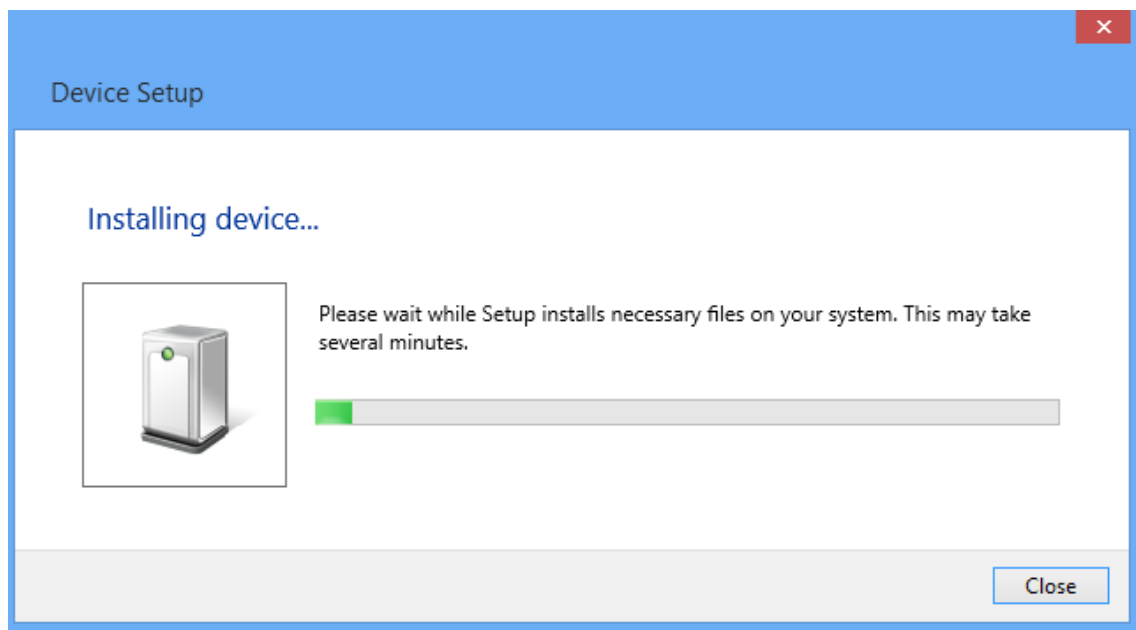


## Windows 8 Compatible List

	WLAN AutoConfig	WLAN utility	ALFA WiFi Scanner
AWUS036H	✓	N/A	✓
AWUS036EW	✓	N/A	✓
UBDo-g / UBDo-gt	✓	N/A	✓
Tube-U(G) / Tube-U(G)s	✓	N/A	✓

## AUTO INSTALLATION

1. Make sure you PC is connecting to Internet
2. Plug AWUS036H into USB port directly
3. **Add Hardware Wizard** will search & install driver for you automatically



Device Setup

### Installing Realtek RTL8187 Wireless 802.11b/g 54Mbps USB 2.0 Network Adapter



Please wait while Setup installs necessary files on your system. This may take several minutes.

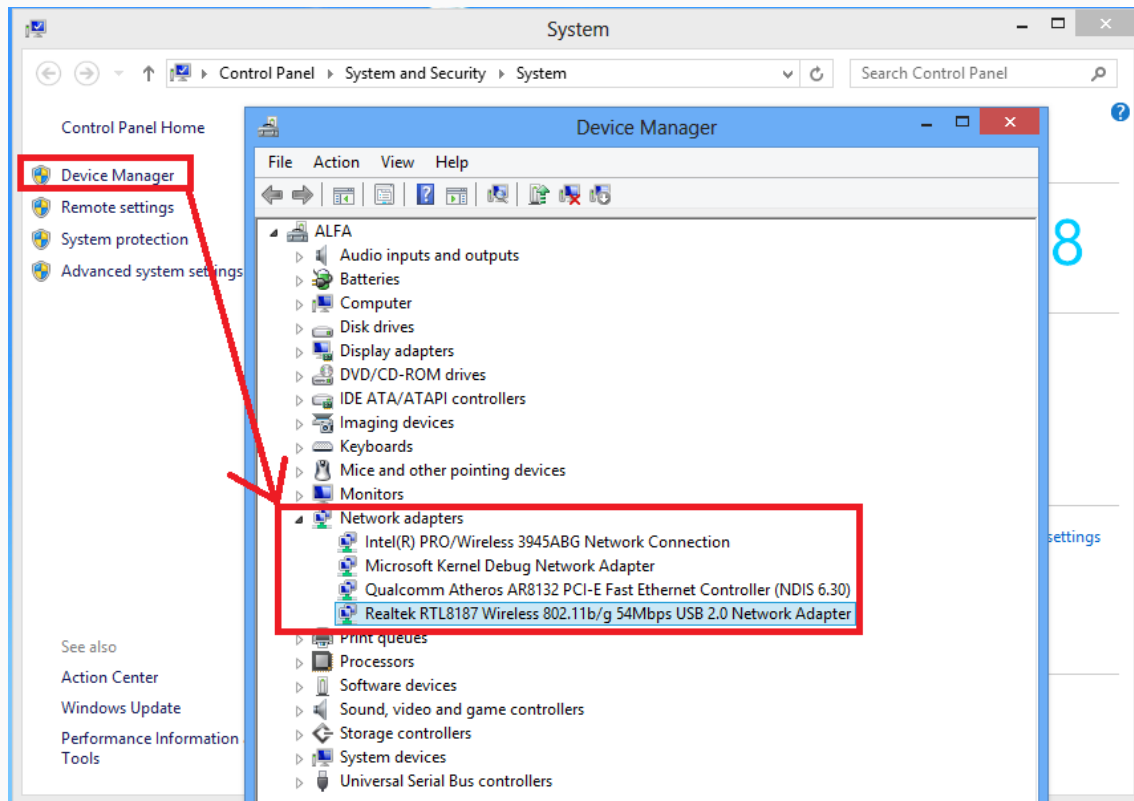


Close

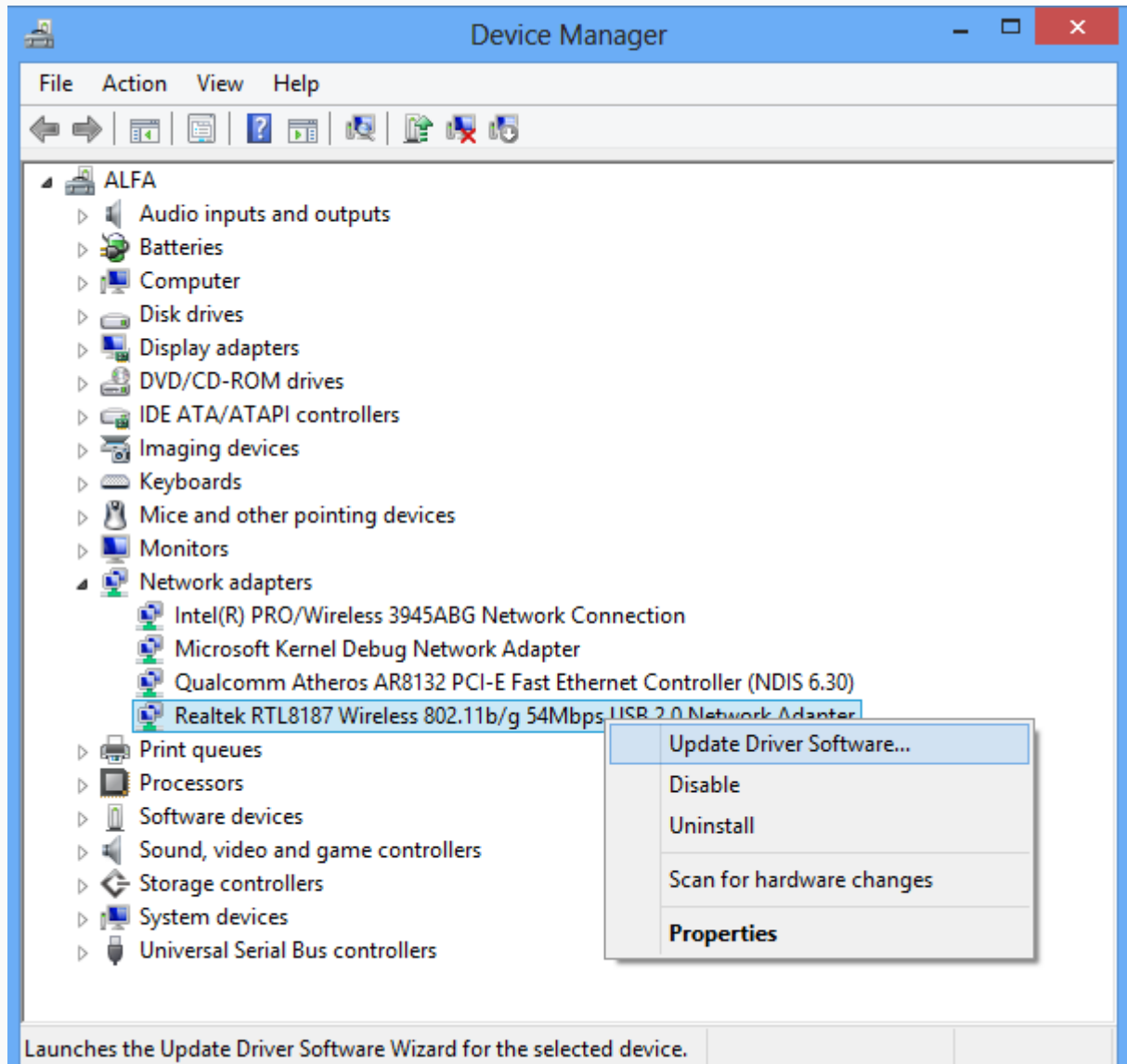
## INSTALL DRIVER MANUALLY

(That's t take AWUS036H as example)

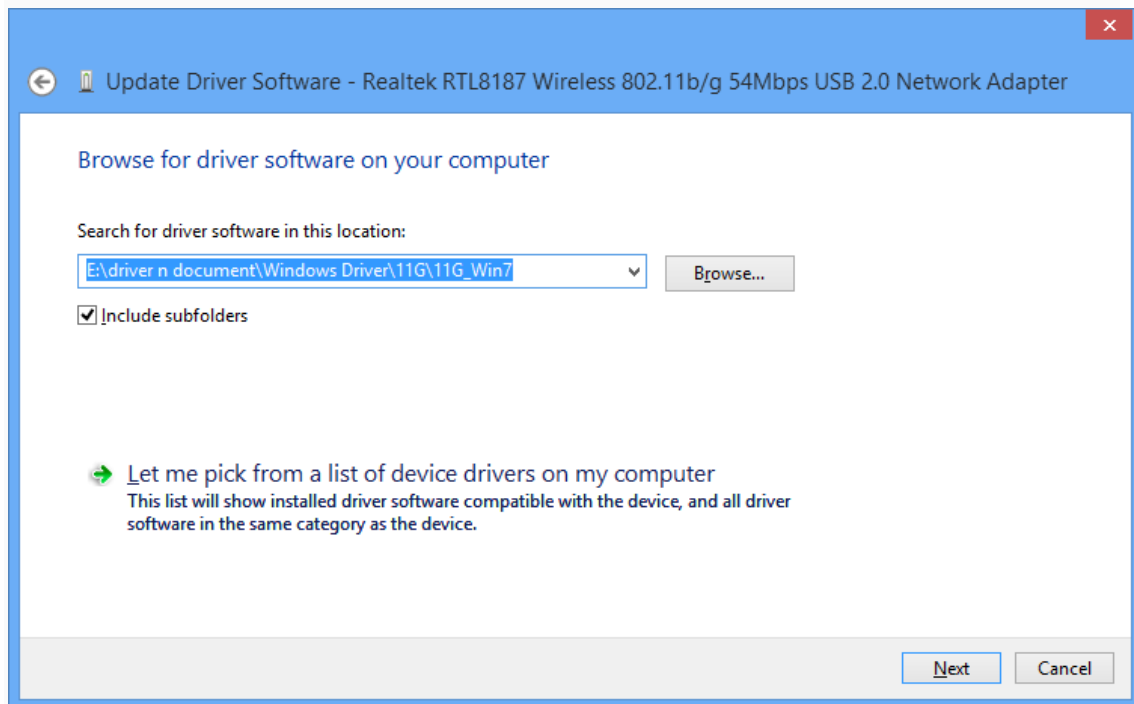
1. Plug in AWUS036H into Windows 8 and launch *Device Manager*
2. Expand your *Network adapters* section in *Device Manager*, click on *Settings -> PC Info -> Device Manager*



3. Right click on AWUS036H (Realtek RTL8187 Wireless .... ) and select **Update Driver Software**



4. Press **Browse** button to locate driver for AWUS036H for Windows 7 where is located in CD as shown in following picture.



5. Driver is installed as shown in following picture

