



AWUS036ACU
802.11ac WiFi AC1200 USB Adapter

Windows Install Guide

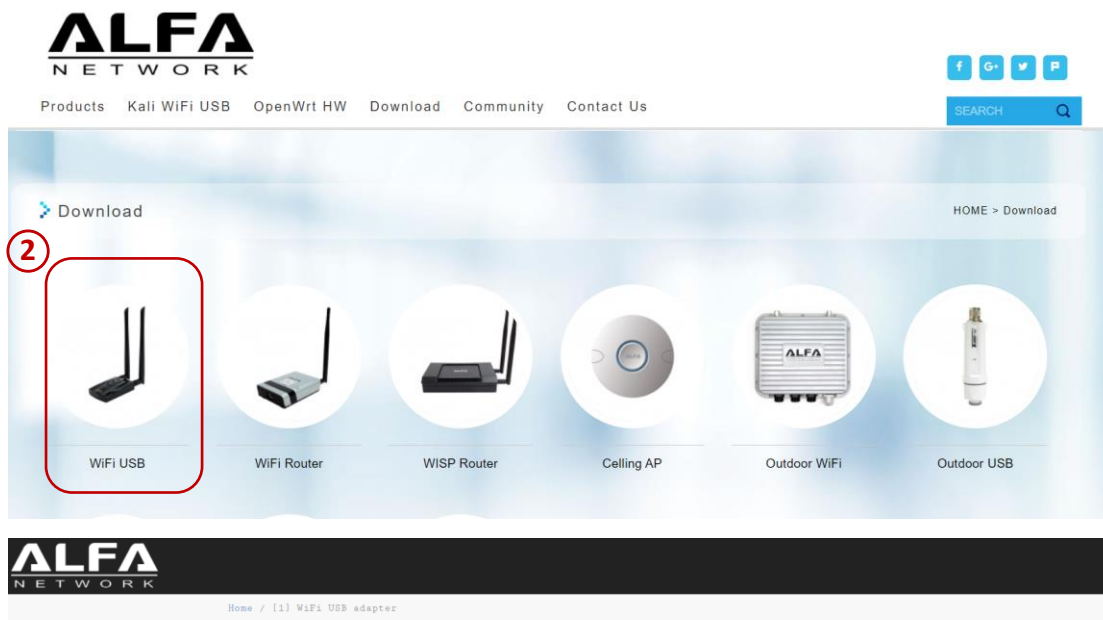
Contents

For Windows 10 none WPA3 driver install	3
For Windows 10 WPA3 supported driver install	6

For Windows 10 none WPA3 driver install

Step 1:

Download driver from ALFA website (www.alfa.com.tw) and choose your ALFA USB antenna model

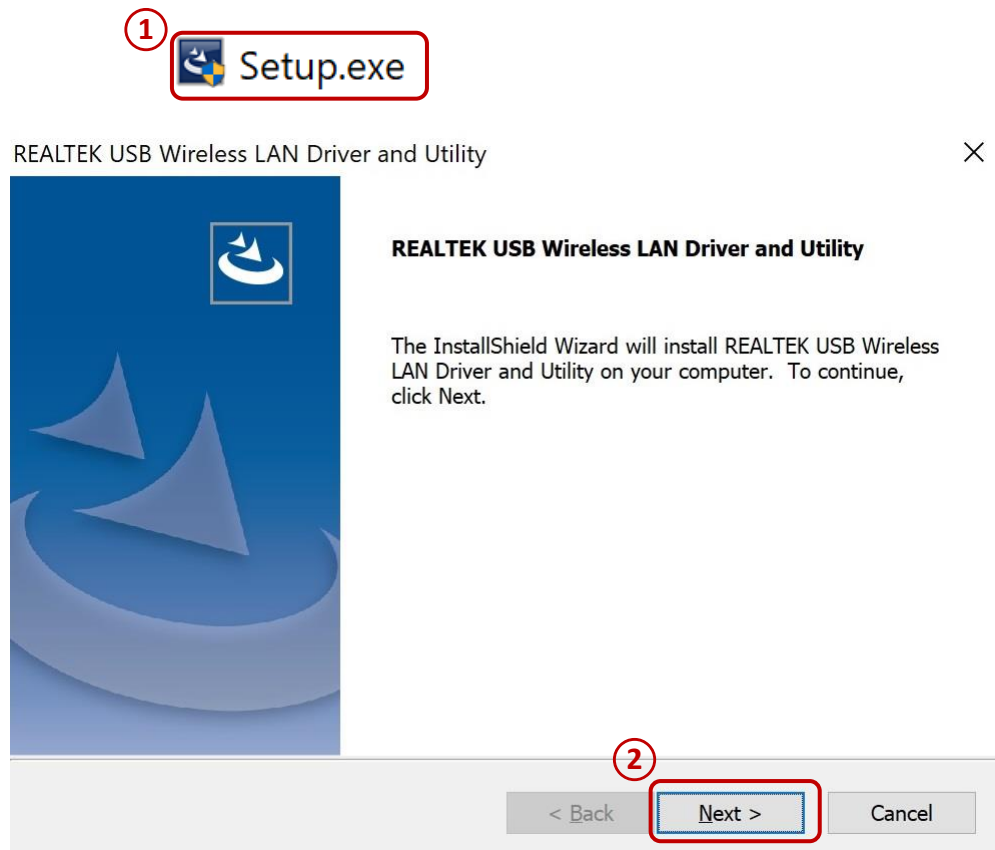


3

File	Size	Last Modified
..	-	2020-10-19 04:03:27
AWUS036AC	-	2018-12-19 11:04:23
AWUS036ACH	-	2018-12-19 11:04:23
AWUS036ACHM	-	2018-12-19 11:04:24
AWUS036ACM	-	2018-12-19 11:04:24
AWUS036ACB	-	2018-12-19 11:04:24
AWUS036EAC	-	2018-12-19 11:04:25
AWUS036EW	-	2018-12-19 11:04:25
AWUS036H	-	2018-12-19 11:04:26
AWUS036NEH	-	2018-12-19 11:04:26

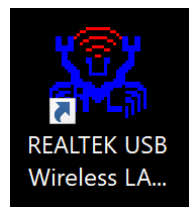
Step 2:

Unzip and click "Setup.exe" start to Install the driver and follow the setup steps



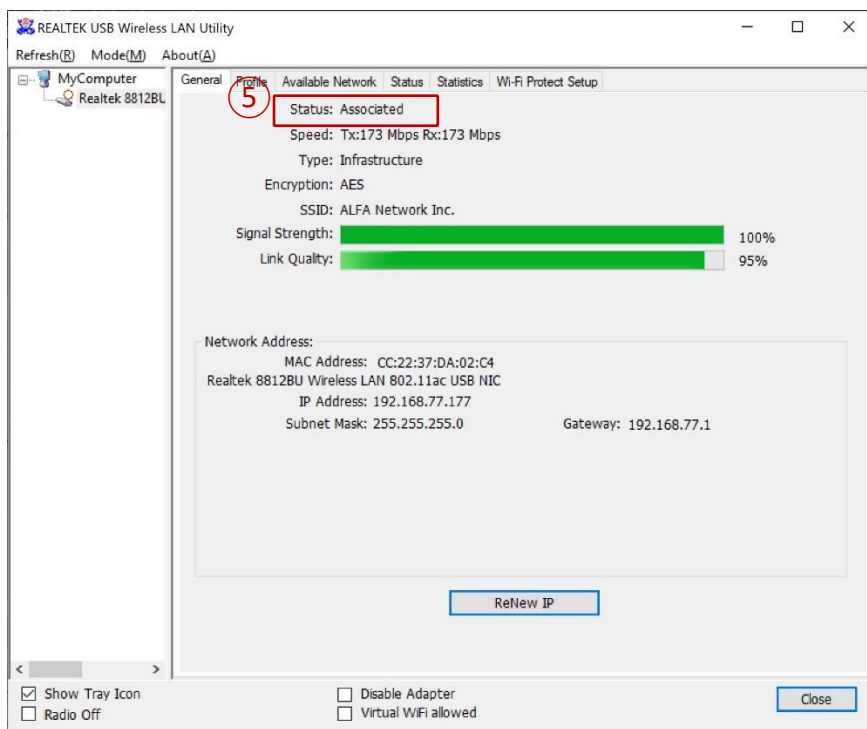
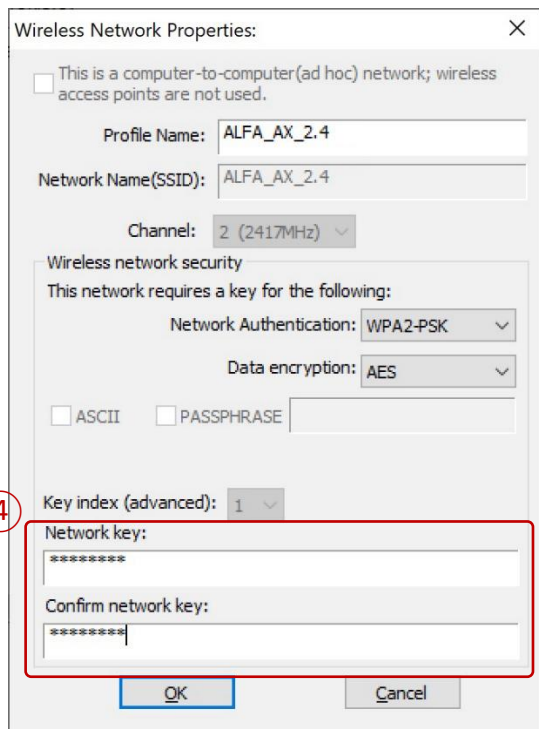
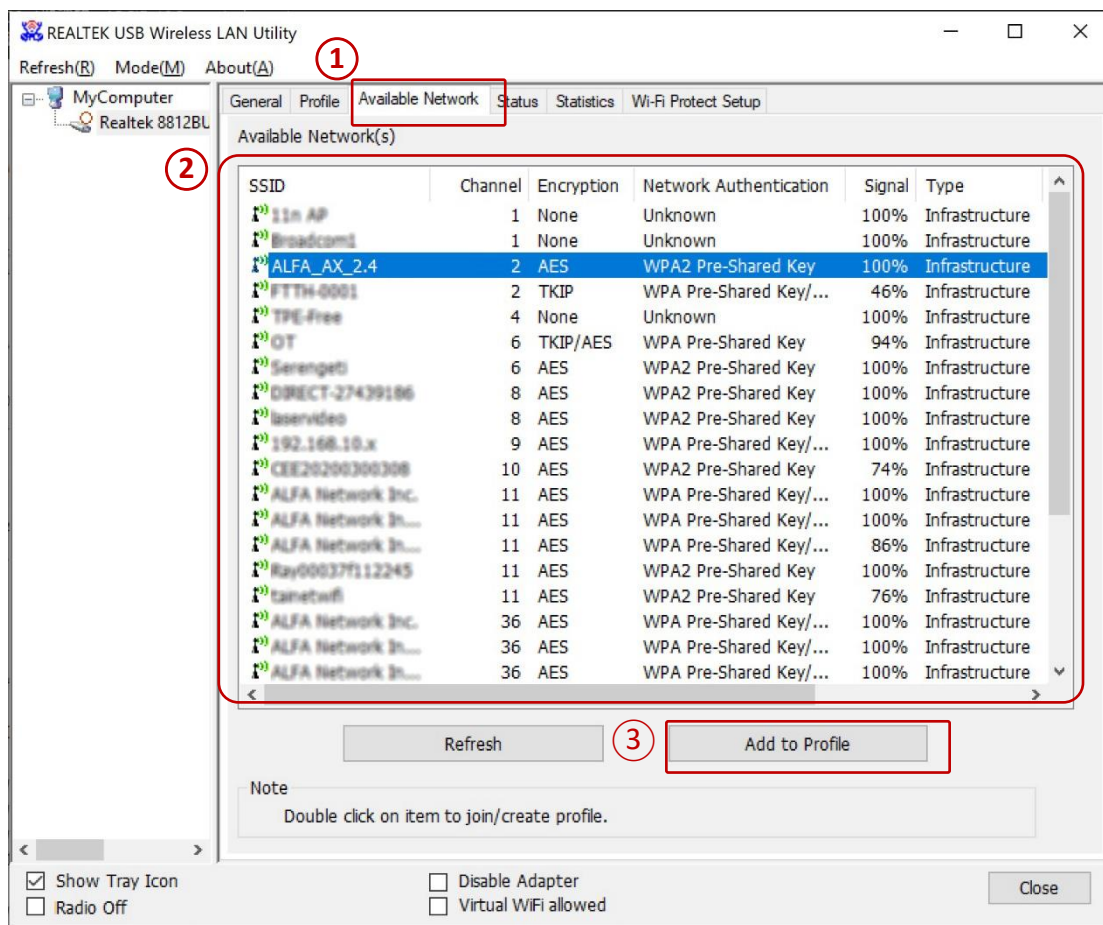
Step3:

Click desktop icon "REALTEK USB Wireless LAN Utility" or on the taskbar "Utility" icon



Step4:

Click "Available Network" and select the Network SSID you want to connect and type-in security key if it required, then wait few seconds, when it connects the Status will show "Associated"

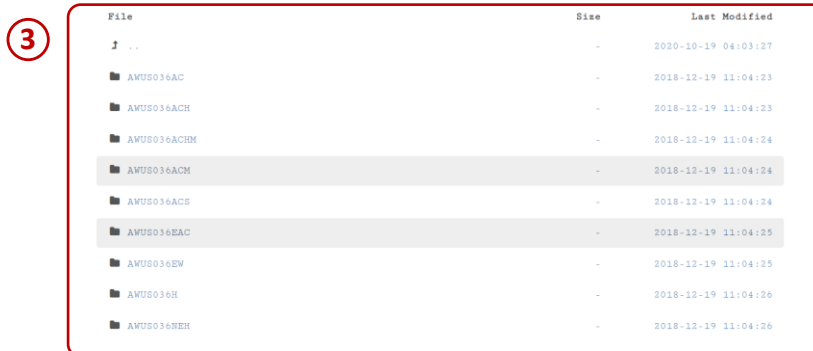
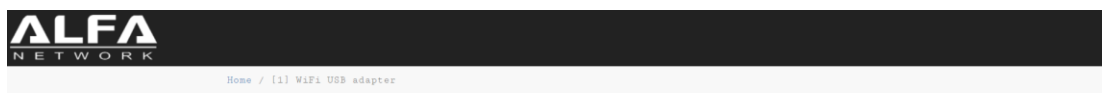
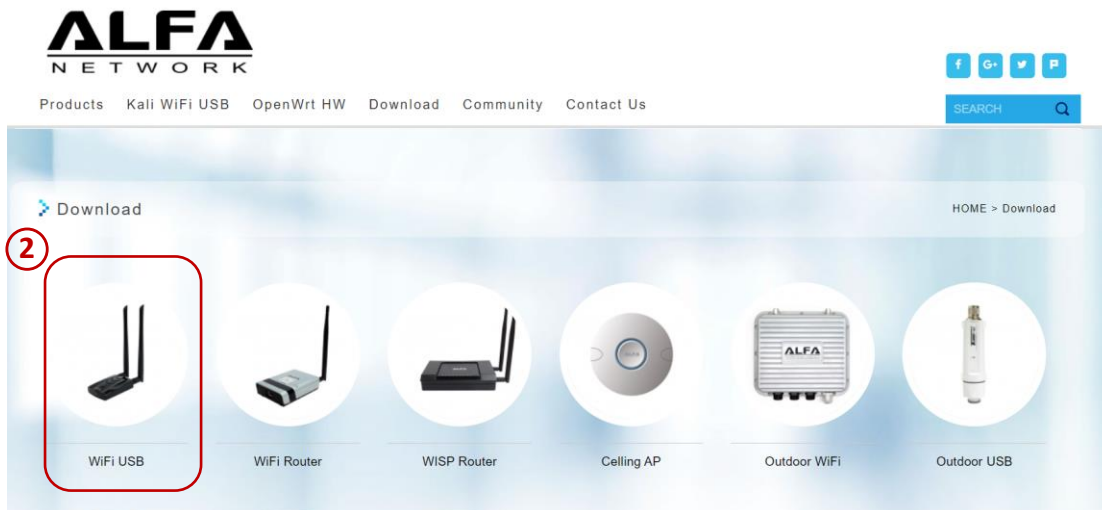
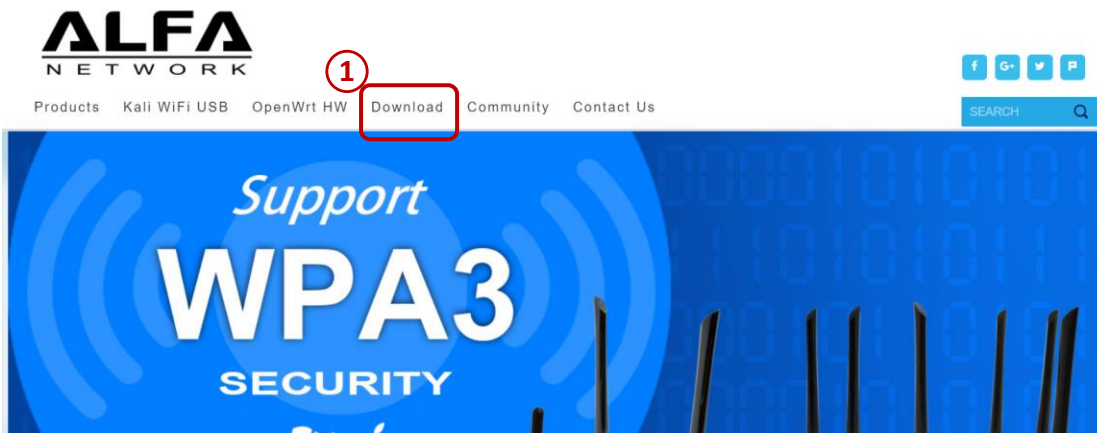


For Windows 10 WPA3 supported driver install

Note: The Windows 10 WPA3 driver doesn't have "REALTEK USB Wireless LAN Utility" **ONLY** can use Windows 10 Wi-Fi settings

Step1:

Download driver from ALFA website (www.alfa.com.tw) and choose your ALFA USB antenna model
Then choose "Windows 10 WPA3 driver"



Step2:

Unzip and click "Setup.exe" start to Install the driver and follow the setup steps



Step3:

Select the Network icon on the taskbar and choose the Wi-Fi network you want, then select Connect. Type the network password, and then select Next

